

THE TEXAS OIL CO.'S NEW TANKER

Danish - built 12,835 - ton

Ship for American Service

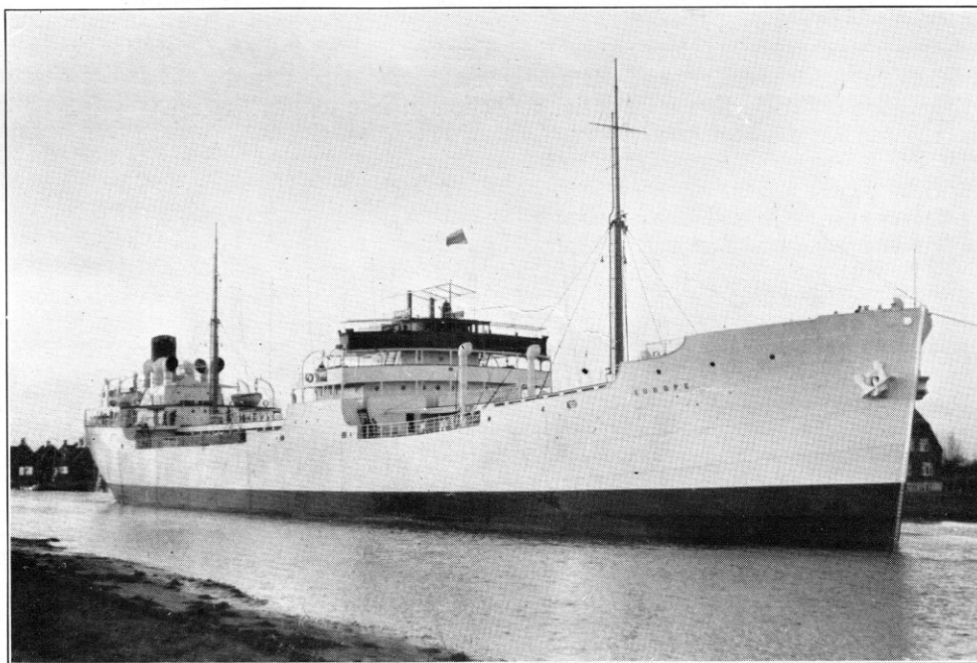
THE design of all tankers is now a matter of interest in view of the attempts which are being made to develop the most economic ship for oil carrying, and of the possibility of further contracts for the construction of motor tankers.

The "Europe," which last month ran trials, is an interesting vessel of the class. She has been built at the Odense Steel Shipyard, Odense, Denmark, and was originally laid down by Mr. A. P. Møller to his own account, but was acquired by the Texas Oil Co., New York, which now has a second tanker of an approximately similar size under construction in Norway.

It is not without interest to note that the "Europe" is somewhat similar in dimensions, engine power and speed to the 12 Anglo-Saxon oil tankers which will be completed in 1935, the "Europe" having a slightly larger carrying capacity.

The main details of the new tanker are as follow:—

Length overall	...	485 ft. 9 ins.
Length b.p.	...	465 ft.
Breadth moulded	...	62 ft.
Depth moulded	...	34 ft. 3 ins.
Deadweight capacity	...	12,835 tons.
Engine power	...	3,850 i.h.p.
Speed	...	12½ knots.



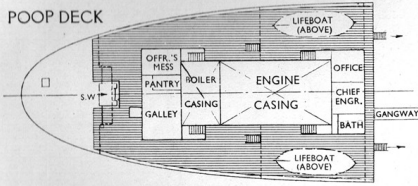
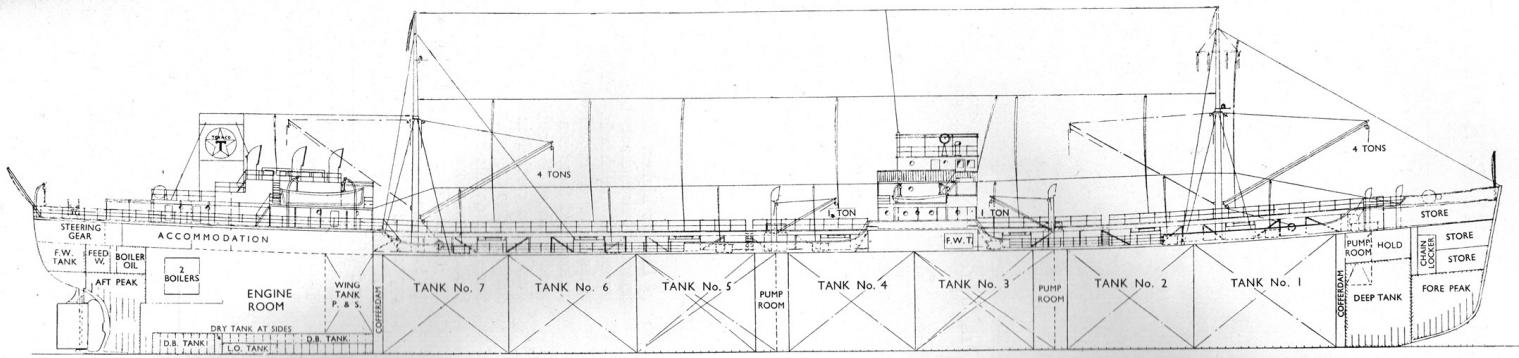
The new tanker "Europe."

The ship has two longitudinal bulkheads and is divided into seven centre tanks and 14 side tanks. The general arrangement plans on the next page show the main details of design.

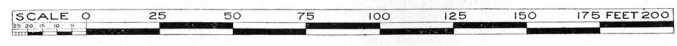
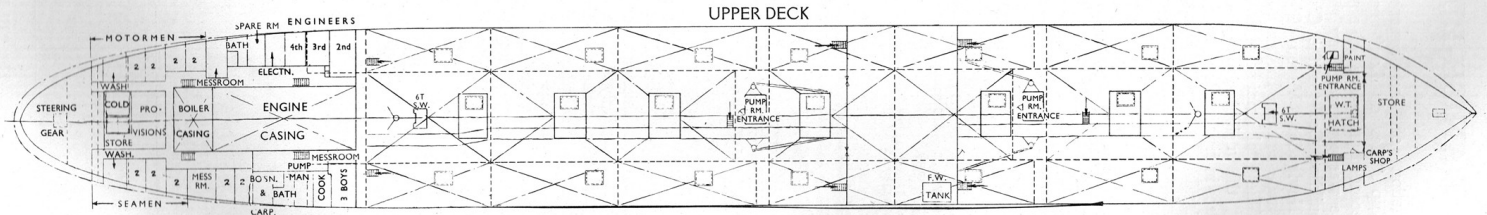
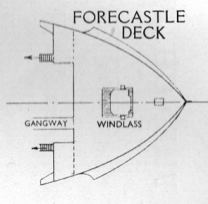
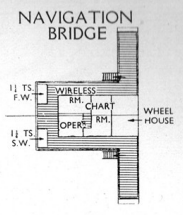
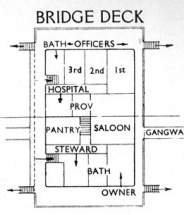
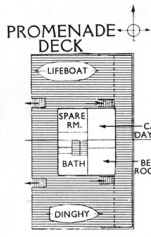
A six-cylinder four-stroke single-acting Burmeister and Wain engine is installed. It is pressure charged, develops 3,850 i.h.p. and has cylinders 740 mm. in diameter, with a piston stroke

of 1,500 mm. Four Hayward Tyler duplex pumps with a total capacity of 900 tons per hour are installed for dealing with the cargo oil, and there is a composite oil and exhaust gas boiler for the supply of steam. The engine-room auxiliaries are steam-driven. A Simplex balanced rudder is fitted.

On completion of the trials the vessel sailed for New York.



Length .. 465 ft.
 Beam .. 62 ft.
 Depth .. 34 ft. 3 ins.
 Gross Register 8,140 tons
 D.W.C. .. 12,750



GENERAL ARRANGEMENT PLANS OF THE DIESEL-ENGINED TANKER "EUROPE."